

# San Luis Potosí

## Roma Norte

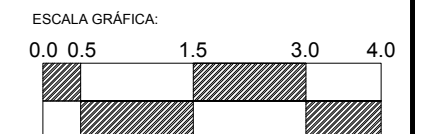
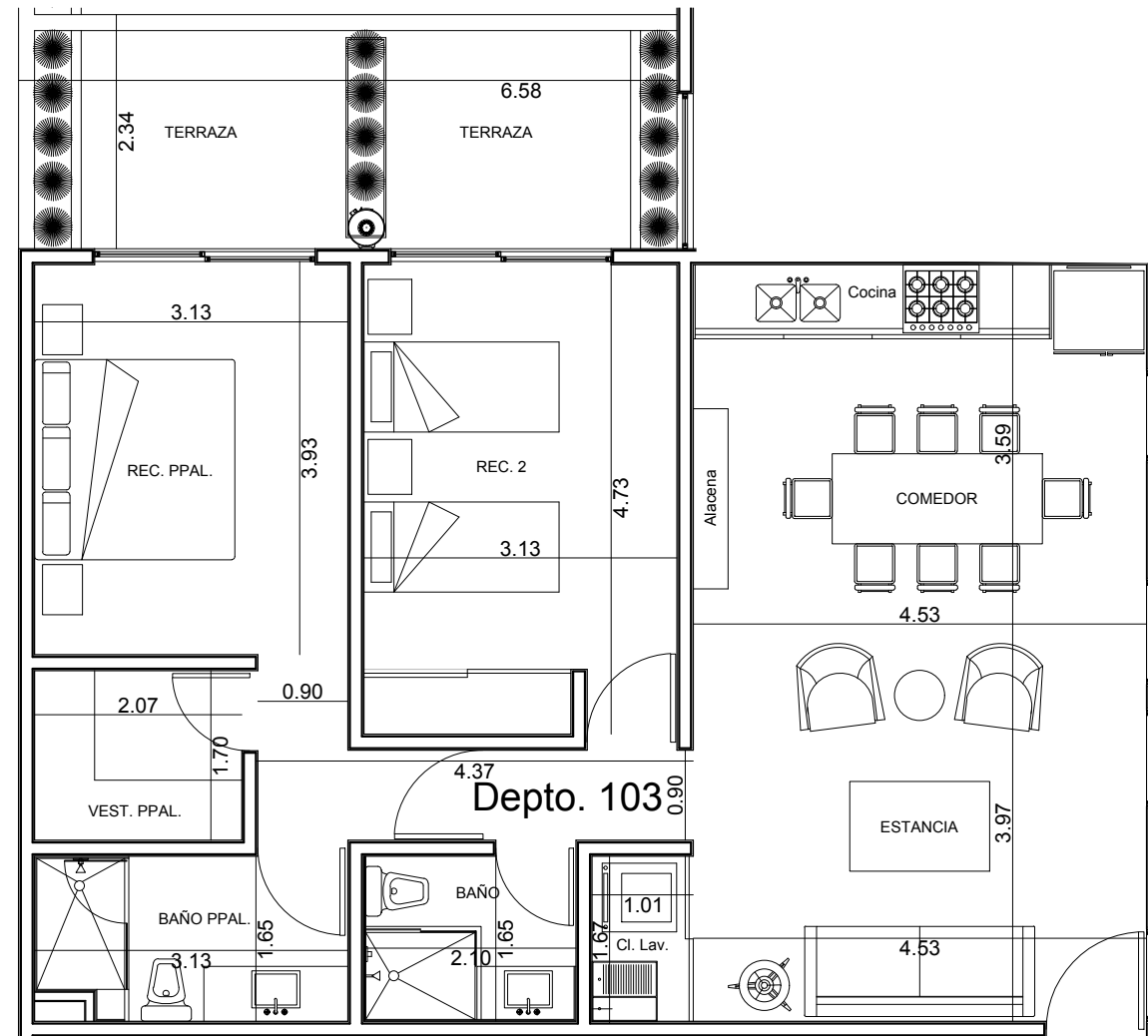
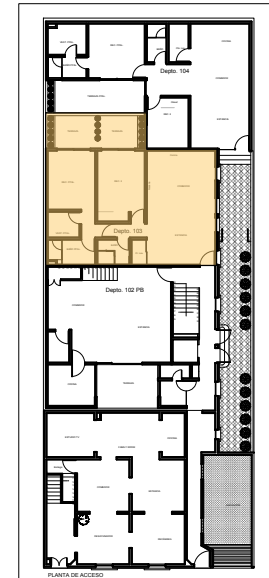
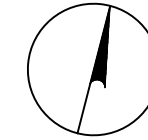
Planta de Acceso

Departamento 103

Planta: 89.96 m<sup>2</sup>  
Terraza: 15.13 m<sup>2</sup>

**Total: 105.09 m<sup>2</sup>**

Planta  
Terraza



**Ventas:**  
San Luis Potosí # 113  
Colonia Roma Norte  
Tel: 5536325032  
www.g-nova.com.mx

